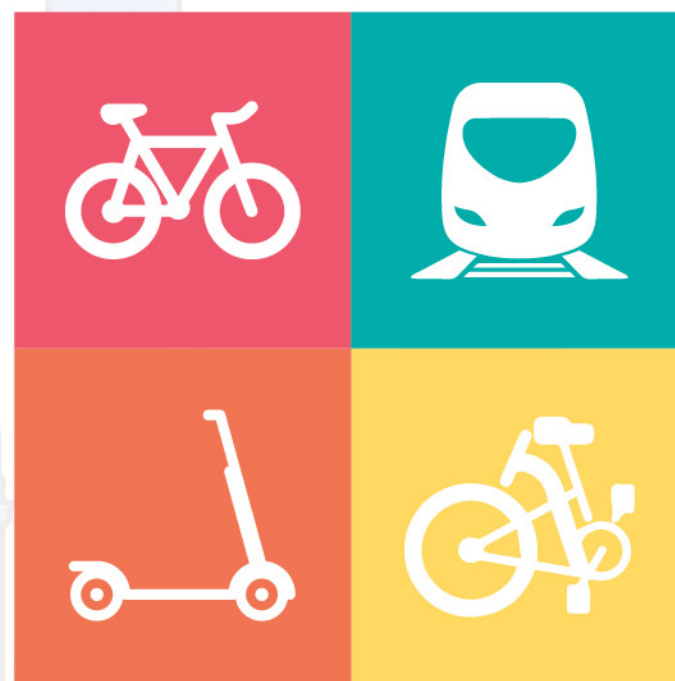


# BIKE AND RIDE

WITH US **rapidKL**  
by **prasarana**



## HOURS

Day	Foldable Bikes/ Scooters	Non-Foldable Bikes
Monday - Friday 10 am - 3 pm 8 pm - 12 am (midnight)	✓	✗
Saturday, Sunday & Public Holiday 6 am - 12 am (midnight)	✓	✓

\* Rapid KL at its discretion may from time to time change the travelling hours.

\*\* There is no extra charge for passengers who wish to bring a non-foldable or foldable bike on-board.

## LINES

Lines	Foldable Bikes/ Scooters	Non-Foldable Bikes
Kelana Jaya (4-car only)	✓	✓
Ampang Sri Petaling	✓	✓
MRT	✓	✓
Monorail (4-car only)	✓	✗
BRT	✓	✗

## GUIDELINES



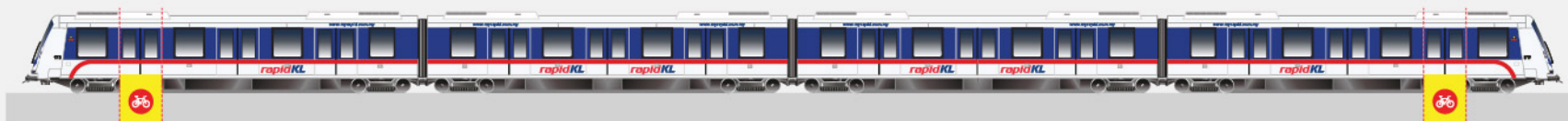
- Non-foldable, foldable bikes and scooters are permitted.
- Cyclists or scooters users under the age of 12 must be accompanied by adults when bringing permitted bike or scooter types onto the train.
- Bikes or scooters should be safely attended by the cyclists at all times.
- Cyclists or scooter users shall enter and exit through the wide-aisle gate.
- Cyclists or scooter users must park at the dedicated wheelchair area onboard the trains. Priority must be given to wheelchair users or people with disabilities.
- When boarding or leaving the train, cyclists or scooter users are reminded to use extreme caution to avoid bumping into other passengers.
- Cyclists or scooter users shall allow other passengers to board and exit the train first.
- Priority to use the elevators shall be given to people with disabilities.
- Every passenger is allowed to carry one permitted bike or scooter at any time.
- Cyclists or scooter users must wait by the specified doors, as indicated by the marking at the platform.
- Cycling or scooting is strictly prohibited inside the trains and stations at all times.
- Ensure that bikes or scooters are clean and free from mud and grease.
- Cyclists or scooter users shall be held responsible for any damage caused to Rapid KL.
- Rapid KL may refuse entry to passenger with permitted bike or scooter if it may cause inconvenience to other passengers or affecting train operations.



Monorail Line (4-car train only)  
wait by 1st door



Ampang / Sri Petaling Line  
wait by 4th door



Kelana Jaya Line (4-car train only)  
wait by 1st door



MRT (Kajang Line)  
wait by 1st door

Legend:

